



# LABview



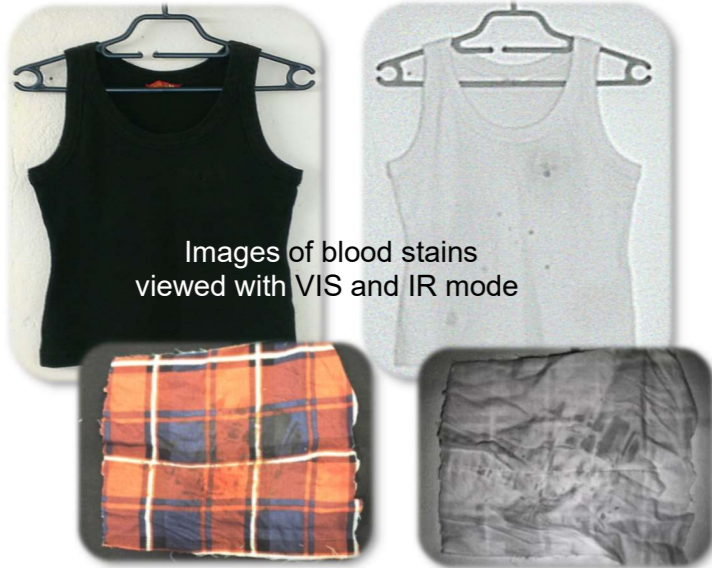
## Evidence Viewing System

for examination & documentation  
of evidence in the forensic laboratory

## System Concept

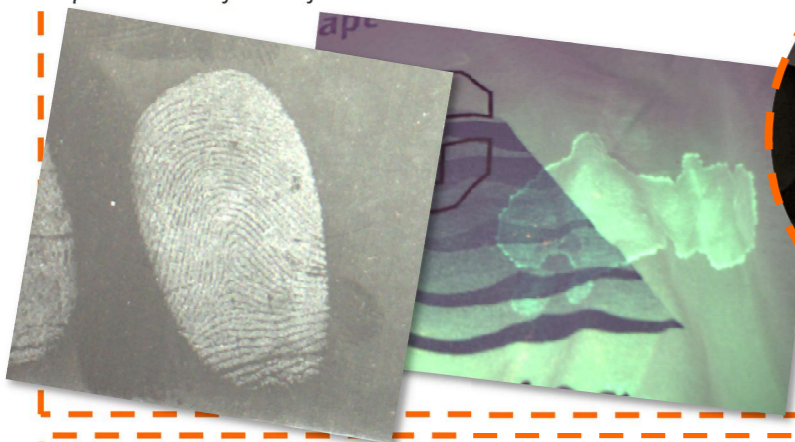
Being able to take high quality photos of evidence is important for the documentation process.

**LABview LV700** is a fully autonomous system for the examination and documentation of various types of evidence in the laboratory. In addition to high quality standard photographic documentation, **LABview** can also be used with forensic light sources to look for blood, body fluids, fingerprints, and accelerants.



Images of blood stains viewed with VIS and IR mode

Attestor Forensics' **LABview SV700** is the perfect tool for laboratory documentation of evidence, capable of being used with a wide variety of evidence, thanks to the automatic filter system and modular light source compatibility. An integrated IR sensitive camera makes it possible to be used for both visible and IR photography. Auto-focus, automatic filter wheel selection, and user-friendly one-click photography control options make the system quick and easy for anyone to use.



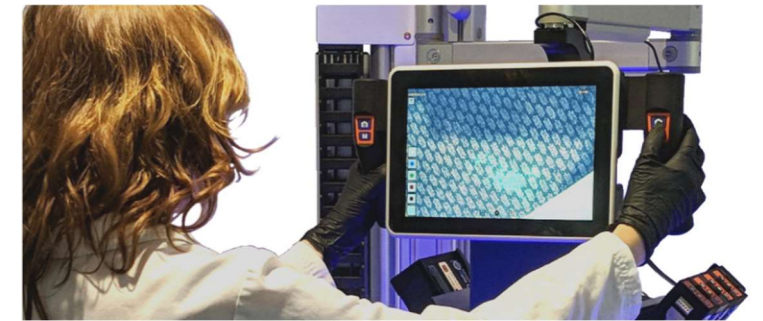
# LABview



## LV800

Chemical reagents like Luminol or derivatives that give off chemoluminescence when in contact with blood are often used, however, the luminescence reaction may be faint and can only be reproduced a limited number of times. Too much reagent can also dilute the stain itself.

Our solution to this is the **LV800** model, with an additional integrated ambient light amplifier camera, specifically designed to be sensitive to this type of light. Optimal search results are possible even when the reagent is so faint that it cannot be seen with the naked eye. Less chemical developer being needed for photography means the possibility to repeat and reproduce the effects for a subsequent documentation and a lower risk of damaging evidence.



## Light Source Compatible

**LABview** is compatible with our full range of light sources, expanding your options for evidence viewing and photography. Our light sources applications cover everything from body fluids and bone to stains and fibers.



## BASIC and PRO Versions

**LABview BASIC** versions can be upgraded from the standard 6MPix camera versions to upgraded **PRO** versions with an enhanced 10MPix camera for higher resolution images and a zoom function.

## LABview Kits

Any version of **LABview** can be purchased, bundled with our **LIGHTkits**. Currently, we also offer our pre-bundled LV900 kit. Any equipment package can be further customized with additional accessories\*.

### LIGHTKITS:

- Each light kit comes with TWO **LIGHTcubes** of the selected color, along with the specialized filter needed for the automatic filter wheel.
- See the **LIGHTcube** information for our full selection of colors.

\*See back cover for additional accessory information.



## LIGHTrail BASIC & PRO

### BASIC:

- Comes standard with each LABview
- 20 cm long rails
- Support for up to 4 LIGHTcubes on each rail

### PRO:

- 50 cm long rails
- 2 independently adjustable mounts on each side
- Support up to 8 LIGHTcubes on each rail





**LABview** by Attestor Forensics is the perfect tool for the fast and efficient examination and documentation of such evidence in the laboratory.

With a modular camera configuration, including a 10 MPix VIS & IR sensitive colour and monochrome camera, it yields optimal search results. An integrated IR light source perfectly suits the needs of searching for dried blood and gunshot residue. A customisable filter wheel allows the system to match forensic light sources already available in the laboratory.

A second camera mount option also allows adding accessories for special functions, such as a high grade light-amplifying camera for low-light environments, Luminol, and other developers that give off faint luminescence or fluorescence.



Each **LABview** comes equipped with our **LIGHTrail BASIC** mounting system for **LIGHTcubes**, which can be upgraded to the **PRO** version to accommodate more light sources. See our **LIGHTrail** brochure for further information.

**LV700 BASIC**

- VIS & IR sensitive 6 MPix camera
- manual & auto-focus
- integrated filter to enhance the IR absorption contrast
- USB compatible interface to connect external hardware, including PCs, mice, keyboards, and flash drives
- monitor, mouse and keyboard as well as USB pen drive
- 10" colour display
- integrated photo and video recording function
- Automatic filter wheel and LIGHTcube compatibility

**LV800 BASIC**

- All the convenient features of the LV700
- light amplification up to x 70,000
- 1.3 MPix imaging interface
- Integrated filter to enhance Luminol luminescence contrast

**PRO UPGRADE**

- 10MPix camera upgrade
- Integrated on-screen zoom function

**Mounting Options (available separately)**



Mounted on a standard camera stand or rolling articulated camera arm stand



On a wall-mounted camera arm or pillar system



On one of our workstations

**Authorised Distributor:**



**Attestor Forensics GmbH**  
 Zeppelinstr. 28  
 88410 Bad Wurzach  
 Germany

[attestor@attestor-forensics.com](mailto:attestor@attestor-forensics.com)  
[www.attestor-forensics.com](http://www.attestor-forensics.com)

This is a product info brochure. Images might not be true to scale. Binding is solely the separately available technical specification. Attestor Forensics GmbH reserves the right to alter the design or specification without prior notice.

